

Copper Gleam PCM or PC in LeaRonal Acid Copper Baths

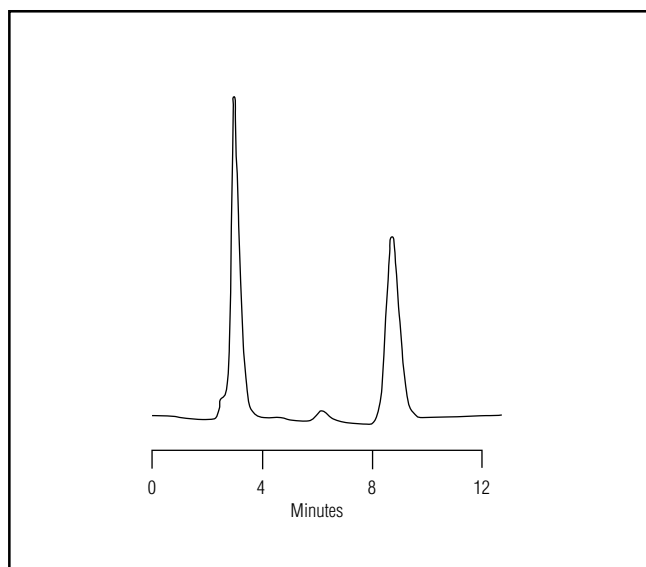


Figure 1. Pure Copper Gleam PCM at 254 nm.

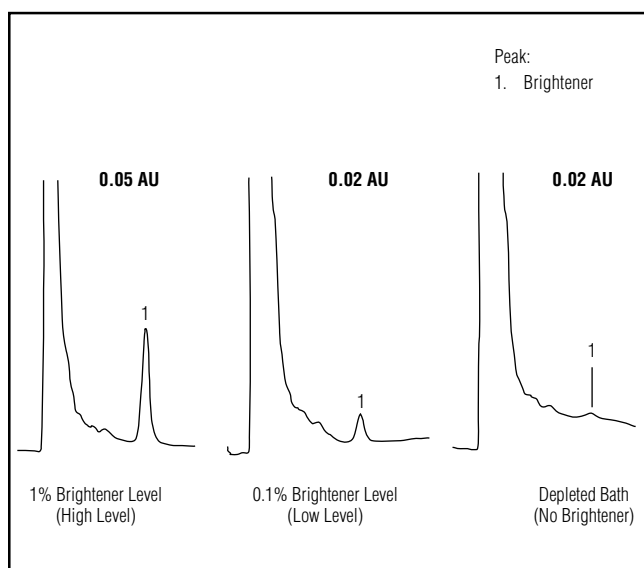


Figure 2. Determination of brightener in acid copper baths by ion chromatography.

PERFORMANCE

The major active component in Gleam PCM of Gleam PC can be determined down to 0.01% in acid copper baths. The manufacturer's suggested concentration range is 0.4% to 1.0%.

APPLICATION AREAS

Acid copper plating
Printed circuit boards

EQUIPMENT

Dionex DX-500 Ion Chromatography system

CONDITIONS

Column: MPIC-NS1
Eluent: 10 mM H₂SO₄
10% CH₃CN
Flow Rate: 1 mL/min
Sample Volume: 50 µL
Detection: UV/Vis, 254 nm

SAMPLE PREPARATION

Samples are injected directly using a 50 µL sample size.

 Printed on recycled and recyclable paper with soy-based inks.