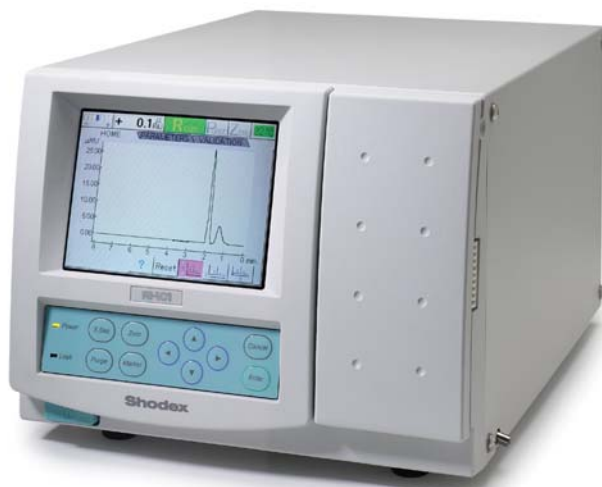


RI-101 Refractive Index Detector



Dionex offers the RI-101 Differential Refractive Index Detector for use with the Summit™ HPLC or any other modular HPLC system. The detector is ideal for analysis of components with limited or no UV absorption such as alcohols, sugars, saccarides, fatty acids, and polymers. It provides high sensitivity, fast baseline stabilization and excellent reproducibility. The RI-101 is fully controlled by the CHROMELEON™ chromatography management system, or can operate in stand-alone mode.

Features

- Automated validation functions save time and make validation of the instrument an easy task. The detector provides information on noise, drift, lamp age, lamp voltage and temperature. A “Span” function verifies accurate signal response for a defined standard solution.
- A start-up sequence automates purging, equilibration, autozero and the control of baseline stability and noise.
- An optimized temperature control system ensures fast baseline stabilization after system start.
- A leak sensor allows for automated system shutdown in case of solvent leakage.
- Temperature control from 30–50 °C
- A full-color liquid crystal display shows an online signal and provides fast access to instrument settings and performance parameters.
- Operation with CHROMELEON software makes the detector easy to use and ensures maximum productivity in instrument control, data processing and reporting of results.



ORDERING INFORMATION

To order in the U.S., call (800) 346-6390 or contact the Dionex Regional Office nearest you. Outside the U.S., order through your local Dionex office or distributor. Refer the following part number.

Detector	Part Number
RI-101 Differential Refractive Index Detector	P/N 5060.0030

RI-101 REFRACTIVE INDEX DETECTOR SPECIFICATIONS

Measuring Method:

Deflection type

Refractive Index Range:

1.00–1.75°

Range:

0.25 to 512 μ RIU

Linearity:

600 μ RIU

Noise Level:

Less than 2.5 nRIU,
response: 1.5 s

Autozero:

Optical and electronic
autozero

Flow Cell:

8 μ L; 0.05 MPa (7.5 psi)
maximum pressure

Dead Volume:

Less than 600 μ L

Max. Flow Rate:

10 mL/min (with water)

Temperature Control:

30 to 50 °C in 1 °C steps

Response:

0.1, 0.25, 0.5, 1.0, 1.5, 2.0,
3.0, 6.0 s

Automated Startup Functions:

Purge cycles, equilibration,
autozero, baseline drift and
noise verification

Validation Functions:

Noise, temperature, drift,
lamp age, lamp voltage,
accuracy (determined filling
the detector cell with a
defined standard solution)

Display:

Color liquid crystal display,
allows real-time baseline
monitoring

Analog Outputs:

Integrator: 0–1 V
Recorder: 0–10 mV

Contact Closure Inputs:

Auto zero, marker, polarity,
purge on/off

Contact Closure Outputs:

Ready, solvent leak, error

Communication:

RS-232

Power Consumption:

150 VA Max.

Dimensions:

260 x 200 x 400 mm
(10.1 x 7.8 x 15.6 inches)

Weight:

12 kg (27 lbs)



CHROMELEON and Summit are trademarks of Dionex Corporation.



Printed on recycled and recyclable paper.

Dionex Corporation
1228 Titan Way
P.O. Box 3603
Sunnyvale, CA
94088-3603
(408) 737-0700

Dionex Corporation
Salt Lake City Technical Center
1515 West 2200 South, Suite A
Salt Lake City, UT
84119-1484
(801) 972-9292

Dionex U.S. Regional Offices
Sunnyvale, CA (408) 737-8522
Westmont, IL (630) 789-3660
Houston, TX (281) 847-5652
Atlanta, GA (770) 432-8100
Marlton, NJ (856) 596-06009

Dionex International Subsidiaries
Austria (01) 616 51 25 Belgium (32) 3-353 42 94 Canada (905) 844-9650 China (852) 2428 3282 Denmark (45) 36 36 90 90
France 01 39 30 01 10 Germany 06126-991-0 Italy (06) 66 51 50 52 Japan (06) 6885-1213 The Netherlands (0161) 43 43 03
Switzerland (062) 205 99 66 United Kingdom (01276) 691722
* Designed, developed, and manufactured under an NSAI registered ISO 9001 Quality System.



LPN 1483 5M 10/02
©2002 Dionex Corporation